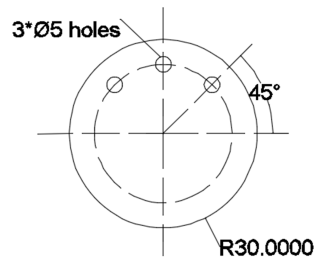


ANSWER KEY

1. (c) 3rd angle
2. (c) Perspective view
3. A
4. (c) 45°
5. (b) 30°
6. ACBD
- 7.

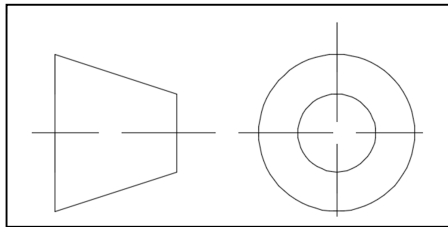


8. (iv) 10,22
9. (d) broken section
10. (b) hexagonal bolt
11. (b) cone
12. (b)
13. (a)
14. (a) bifurcated rivets
15. (a) thread
16. (d) @40<40
17.

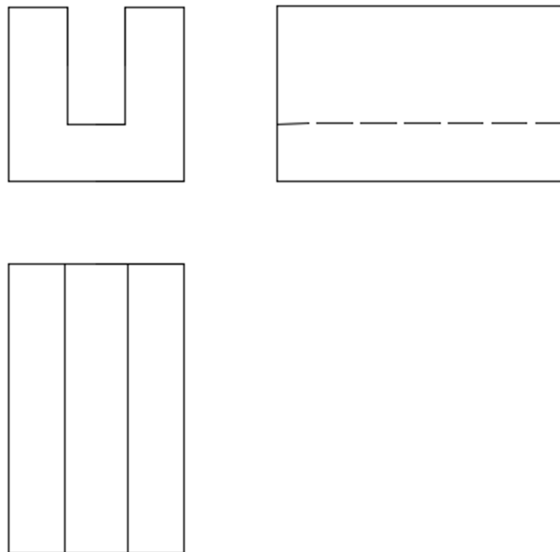
	X	Y	D
A	5	6	6
B	2	2	2
C	8	2	4

 (a)
18. (b) 3o' clock
19. (c) World Coordinate system
20. (a) yes
21. (d) Angled lines
22. (b) 2
23. (b) false
24. (a) true
25. (c) Metric threads of 33mm outside diameter and 2mm pitch
26. (a) square
27. (b) 24.5

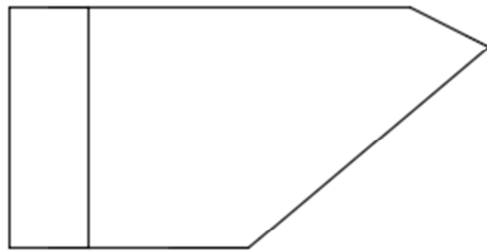
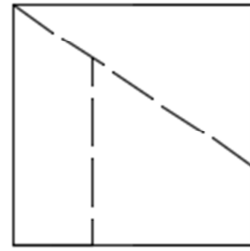
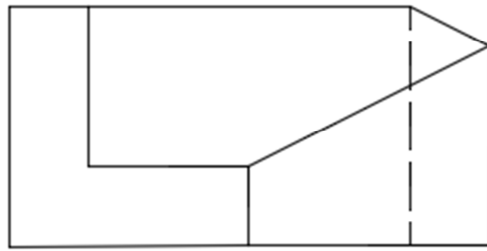
- 28. (d) 1.75
- 29. (b) π
- 30. (a) 2:1
- 31. (c) 1:2
- 32. (b) 1:1
- 33. (a) 297,210
- 34. (a) 3 times the width
- 35. (b) the internal details of object
- 36. (d) orthographic
- 37. (b) 45°
- 38. (a) 30°
- 39. (c) both a&b
- 40. Computer Aided Design
- 41. Computer Aided Designing and Drafting
- 42. User Co-ordinate System
- 43. Absolute, Relative rectangular , Relative polar, Direct distance
- 44.



- 45. 185,65
- 46. Geometrical constrains, Dimensional constrains
- 47. Rectangular and Circle
- 48.



49.



50.

